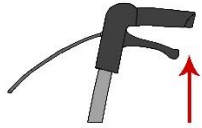


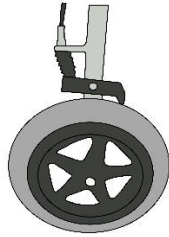
## Attendant Brakes

Step 1



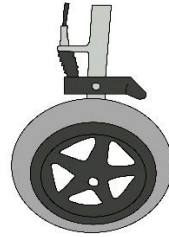
The brake lever on the attendant handles can be squeezed upwards to apply the brakes.

Step 2



Squeezing the attendant brake lever will push a brake lever down on the rear wheels and slow or stop the wheelchair.

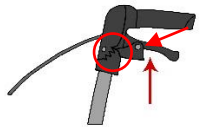
Step 3



Releasing the attendant brake lever will lift the brake lever up from the rear wheels which will release the brakes.

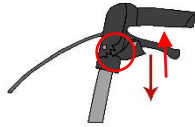
## Locking Brakes

Step 1



Whilst squeezing the attendant brake lever push the brake lock, under the lever, forward on each side to hold/lock the brakes.

Step 2



Pull/click the brake lock, under the attendant brake lever, back/up on each side to remove the hold/lock and release the brakes.

Step 3



Ensure the brakes are always on when sitting down or rising from the wheelchair or when the wheelchair is stationary.

## Super-Lightweight Features

Step 1



With the wheelchair fully folded the 2 seat handles can be used to lift the wheelchair. The weight, with the foot rests fitted, is approximately 8.9kg.

Step 2



By removing the swing away foot rests the lifting weight is reduced. The weight, without the foot rests is approximately 7.8kg.

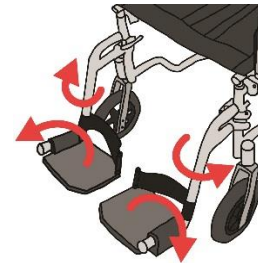
Step 3



Due to a lighter lifting weight, the wheelchair can be held in a horizontal position for loading into, or removal from, a car.

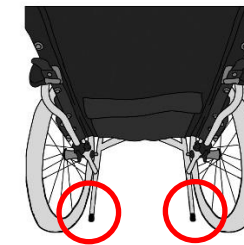
## Features

Step 1



The swing away foot rests make it easier to get into or out of the wheelchair.

Step 2



Push down on the curb stepper with your foot whilst pulling back on the handles to make it easier to get up small curbs or over bumps.

Step 3



The seat back has a handy pocket for transporting lightweight items.